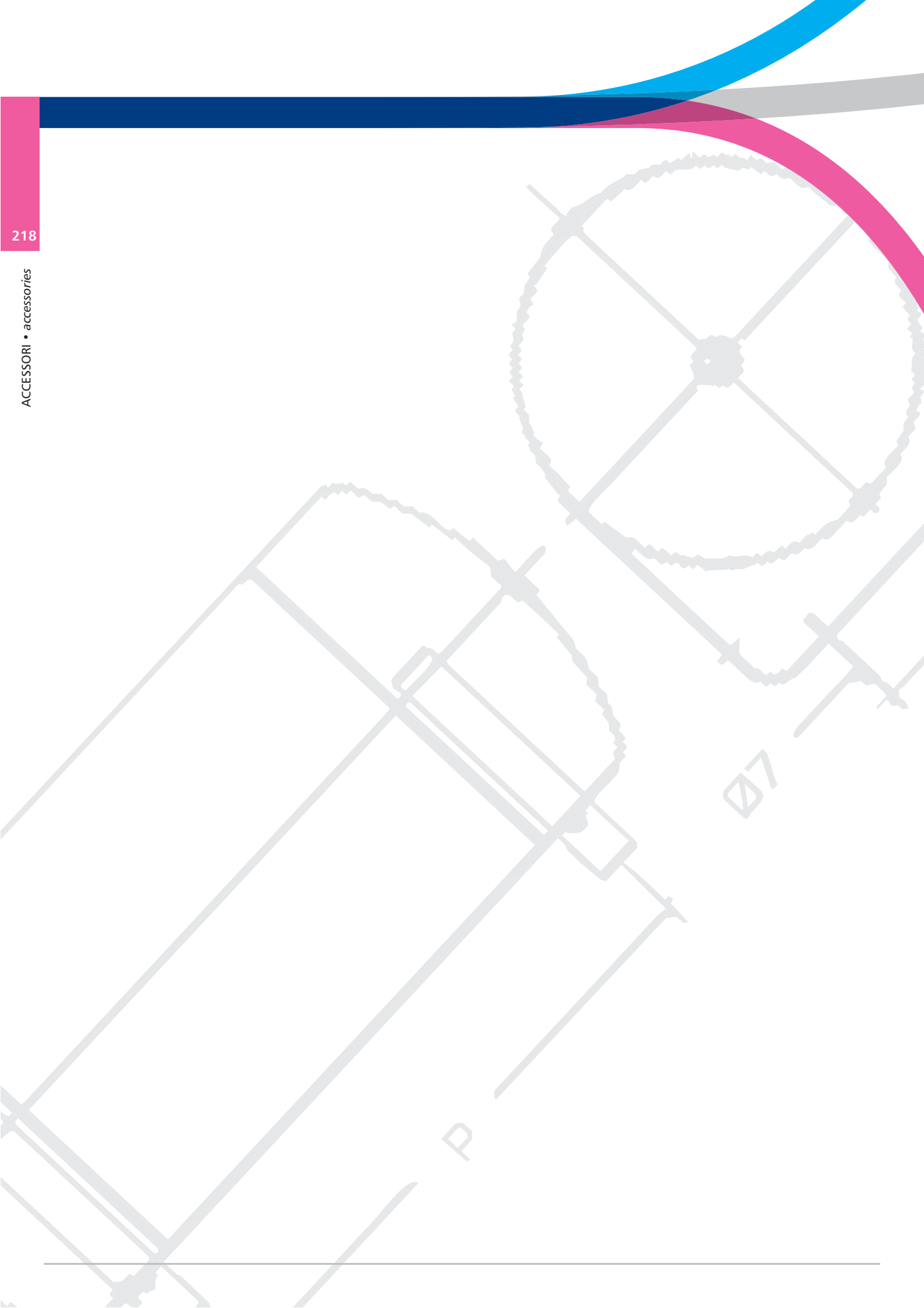


ACCESSORI • *accessories*

PAG 219 MANOMETRI • *pressure gauges*

PAG 227 SERBATOI • *tanks* **AISI 304**

PAG 229 ELEMENTI DI TENUTA PER FILETTI • *sealing for threaded elements*



MANOMETRI • pressure gauges

LEGENDA CODICE • Model designation

M	A	B	R	63	R02	38	BG														
↓	↓	↓	↓	↓	↓	↓	↓														
Codice code	Materiale Cassa case material	Materiale Attacco connection material	Tipo di Attacco connection type	Ø Diametro Ø diameter	Filetto thread size	Scala range	BG: Bagno di glicerina glycerin filled Se omissso: a secco if omitted: unfilled														
	A: ABS X: Inox M: Metallo/metal	B: Ottone/brass X: Inox	P: Posteriore/back R: Radiale/bottom F: Flangia a 3 fori 3 holes flange S: Staffa/clamp	40 = 40 mm 50 = 50 mm 63 = 63 mm 100 = 100 mm	<table border="1" style="margin-left: auto; margin-right: auto;"> <tr><th colspan="2">Conico BSPT BSPT thread</th></tr> <tr><td>01</td><td>R 1/8"</td></tr> <tr><td>02</td><td>R 1/4"</td></tr> <tr><th colspan="2">Cilindrico BSPP BSPP thread</th></tr> <tr><td>01</td><td>G 1/8"</td></tr> <tr><td>02</td><td>G 1/4"</td></tr> <tr><td>04</td><td>G 1/2"</td></tr> </table>	Conico BSPT BSPT thread		01	R 1/8"	02	R 1/4"	Cilindrico BSPP BSPP thread		01	G 1/8"	02	G 1/4"	04	G 1/2"	-1 0 Bar = 20 0 1 Bar = 32 0 1,6 Bar = 33 0 2,5 Bar = 34 0 4 Bar = 35 0 6 Bar = 36 0 10 Bar = 37 0 12 Bar = 38 0 16 Bar = 39 0 25 Bar = 40 0 40 Bar = 41 0 60 Bar = 42 0 100 Bar = 43 0 160 Bar = 44 0 250 Bar = 45 0 315 Bar = 46 0 400 Bar = 47 0 600 Bar = 48 0 800 Bar = 49 0 1000 Bar = 50	Per codici: MXBR, MXBP, MXBF, MXBS BG è omissso perché STANDARD For code: MXBR, MXBP, MXBF, MXBS BG is omitted because STANDARD
Conico BSPT BSPT thread																					
01	R 1/8"																				
02	R 1/4"																				
Cilindrico BSPP BSPP thread																					
01	G 1/8"																				
02	G 1/4"																				
04	G 1/2"																				



TABELLA DI CONVERSIONE DELLE PRINCIPALI UNITA' DI MISURA • conversion table of the pressure units

Unità- unit	bar	mbar	Pa	kPa	Mpa	kp/mm ²	kp/cm ²
1 bar	1	1000	100000	100	0,1	0,01019716	1,019716
1 mbar	0,001	1	100	0,1	0,001	0,0000101972	0,001019716
1 Pa	0,00001	0,01	1	0,001	0,000001	0,000000102	0,00001097
1 kPa	0,01	10	1000	1	0,001	0,0001019716	0,01019716
1 MPa	10	10000	1000000	1000	1	0,1019716	10,19716
1 kp/mm ²	98,0665	9806,5	9806650	9806,65	9,80665	1	100
1 kp/cm ²	0,980665	980,665	98066,5	98,0665	0,0980665	0,01	1
1 atm	1,01325	1013,25	101325	101,325	0,101325	0,01033227	1,033227
1 mmHg	0,001333224	1,333224	133,322	0,133324	0,000133322	0,00013951	0,00135951
1 mCA	0,0980665	98,0665	9806,05	9,80665	0,00980665	0,001	0,1
1 mmCA	0,00098067	0,0980665	9,80665	0,00980665	0,00009807	0,000001	0,0001
1 psi	0,06894757	68,94757	6894,757	6,894757	0,006894757	0,0070307	0,070307
1 H ₂ O	0,00249089	2,49089	249,089	0,249089	0,000249089	0,0000254	0,00254
1 Hg	0,0338639	33,8639	3386,4	3,3864	0,0033864	0,000345312	0,0345312

MANOMETRI A SECCO PER L'INDUSTRIA

unfilled pressure gauges for the industry

APPLICAZIONI • Applications

Per gas e liquidi che non sono altamente viscosi, non cristallizzano e non sono aggressivi per la lega di rame. Per misurare punti soggetti a vibrazioni e alte pressioni.

Per misurare gas o vapori, questi strumenti devono essere utilizzati in conformità con le norme EN 837-1 / 7,3.

For gas and liquid media which are not highly viscous, do not crystallize and are not aggressive to copper alloys.

For measuring the subject to vibration and high pressure.

For measuring gas or vapour these instruments must be used in accordance with the safety recommendations of EN 837-1 / 7,3

DATI TECNICI

Fluidi compatibili	Gas e liquidi compatibili con i materiali costruttivi
Materiali costruttivi	Cassa: ABS Perno e Molla: Ottone
Filettature	Gas Conica BSPT da R1/8" a R1/4"
Pressione d'esercizio max	max 3/4 del valore del fondo scala per pressioni statiche. max 2/3 del valore di fondo scala per pressioni a colpo d'ariete 100% del valore di fondo scala per breve tempo
Temperatura ambiente	da -20°C a +60°C
Temperatura d'esercizio	max 60°C
Grado di protezione	IP 32 (EN 60 529)

Technical specifications

<i>fluid types</i>	<i>gas and liquid suitable with construction materials</i>
<i>construction materials</i>	<i>case: ABS spring & hub: brass</i>
<i>threads</i>	<i>taper gas BSPT from R1/8" to R1/4"</i>
<i>max working pressure</i>	<i>max 3/4 of the value of full scale for static pressure. max 2/3 of the value of full scale for knock pressure 100% of the value scale for a short time</i>
<i>room temperature</i>	<i>from -20°C to +60°C</i>
<i>working temperature</i>	<i>max 60°C</i>
<i>protection degree</i>	<i>IP 32 (EN 60 529)</i>

Prodotti conformi alla direttiva 2002/95/EC

products in compliance with the directive 2002/95/EC

Prodotti conformi alla direttiva 1907/2006

products in compliance with the directive 1907/2006

I dati tecnici e le quote non sono vincolanti • *drawings and technical data are not binding*

manometro a secco per l'industria con cassa ABS antiurto, perno e molla in ottone, attacco radiale, filetto conico BSPT, a norma EN 837-1 / 7,3
impact resistant unfilled pressure gauge for the industry with ABS case, spring & hub in brass, bottom connection, BSPT thread, according to directive EN 837-1 / 7,3

MABR


CODE	Filetto Attacco connection thread	Ø Cassa Ø case	Scala - range (Bar PSI)	Precisione accuracy	
MABR40R0120	R1/8"	40	-1-0	Classe class 2,5	1
MABR40R0132	R1/8"		0-1		1
MABR40R0133	R1/8"		0-1,6		1
MABR40R0134	R1/8"		0-2,5		1
MABR40R0135	R1/8"		0-4		1
MABR40R0136	R1/8"		0-6		1
MABR40R0137	R1/8"		0-10		1
MABR40R0138	R1/8"		0-12		1
MABR40R0139	R1/8"		0-16		1
MABR40R0140	R1/8"		0-25		1
MABR50R0234	R1/4"	50	0-2,5	Classe class 2,5	1
MABR50R0235	R1/4"		0-4		1
MABR50R0236	R1/4"		0-6		1
MABR50R0238	R1/4"		0-12		1
MABR50R0239	R1/4"		0-16		1
MABR50R0240	R1/4"		0-25		1
MABR63R0220	R1/4"	63	-1-0	Classe class 2,5	1
MABR63R0232	R1/4"		0-1,0		1
MABR63R0233	R1/4"		0-1,6		1
MABR63R0234	R1/4"		0-2,5		1
MABR63R0235	R1/4"		0-4		1
MABR63R0236	R1/4"		0-6		1
MABR63R0237	R1/4"		0-10		1
MABR63R0238	R1/4"		0-12		1
MABR63R0239	R1/4"	0-16	1		
MABR63R0240	R1/4"	0-25	1		

MANOMETRI • pressure gauges

manometro a secco per l'industria con cassa ABS antiurto, perno e molla in ottone, attacco posteriore, filetto conico BSPT a norma EN 837-1 / 7,3
 impact resistant unfilled pressure gauge for the industry with ABS case, spring & hub in brass, back connection, BSPT thread according to directive EN 837-1 / 7,3

MABP



CODE	Filetto Attacco connection thread	Ø Cassa Ø case	Scala - range (Bar PSI)	Precisione accuracy	
MABP40R0120	R1/8"	40	-1-0	Classe class 2,5	1
MABP40R0132	R1/8"		0-1,0		1
MABP40R0133	R1/8"		0-1,6		1
MABP40R0134	R1/8"		0-2,5		1
MABP40R0135	R1/8"		0-4		1
MABP40R0136	R1/8"		0-6		1
MABP40R0137	R1/8"		0-10		1
MABP40R0138	R1/8"		0-12		1
MABP40R0139	R1/8"		0-16		1
MABP40R0140	R1/8"		0-25		1
MABP40R0143	R1/8"		0-100		1
MABP50R0120	R1/8"		50		-1-0
MABP50R0132	R1/8"	0-1,0		1	
MABP50R0133	R1/8"	0-1,6		1	
MABP50R0134	R1/8"	0-2,5		1	
MABP50R0135	R1/8"	0-4		1	
MABP50R0136	R1/8"	0-6		1	
MABP50R0138	R1/8"	0-12		1	
MABP50R0139	R1/8"	0-16		1	
MABP50R0140	R1/8"	0-25		1	
MABP50R0234	R1/4"	0-2,5		1	
MABP50R0235	R1/4"	0-4		1	
MABP50R0236	R1/4"	0-6		1	
MABP50R0238	R1/4"	0-12	1		
MABP50R0239	R1/4"	0-16	1		
MABP50R0240	R1/4"	0-25	1		
MABP63R0220	R1/4"	63	-1-0	Classe class 2,5	1
MABP63R0232	R1/4"		0-1,0		1
MABP63R0233	R1/4"		0-1,6		1
MABP63R0234	R1/4"		0-2,5		1
MABP63R0235	R1/4"		0-4		1
MABP63R0236	R1/4"		0-6		1
MABP63R0237	R1/4"		0-10		1
MABP63R0238	R1/4"		0-12		1
MABP63R0239	R1/4"		0-16		1
MABP63R0240	R1/4"		0-25		1
MABP63R0245	R1/4"	0-250	1		



MANOMETRI IN GLICERINA CON CASSA INOX AISI 304

filled pressure gauges INOX AISI 304 case

APPLICAZIONI • Applications

Per gas e liquidi che non sono altamente viscosi, non cristallizzano e non sono aggressivi per la lega di rame.
 Per misurare punti soggetti a vibrazioni e alte pressioni.
 Per misurare gas o vapori, questi strumenti devono essere utilizzati in conformità con le norme EN 837-1 7,3

*For gas and liquid media which are not highly viscous, do not crystallize and are not aggressive to copper alloys.
 For measuring the subject to vibration and high pressure.*

For measuring gas or vapour these instruments must be used in accordance with the safety recommendations of EN 837-1 / 7,3

DATI TECNICI

Fluidi compatibili	Gas e liquidi compatibili con i materiali costruttivi
Materiali costruttivi	Cassa: Inox AISI 304 Perno e Molla: Ottone
Filettature	Gas Cilindrico BSPP da G1/8" a G1/4"
Pressione d'esercizio max	max 3/4 del valore del fondo scala per pressioni statiche. max 2/3 del valore di fondo scala per pressioni a colpo d'ariete 100% del valore di fondo scala per breve tempo
Temperatura ambiente	max 60°C
Temperatura d'esercizio	da -20°C a +60°C
Grado di protezione	IP 65 (EN 60 529) IP 54 (25 bar) per sfiato dal tappino sulla cassa

Prodotti conformi alla direttiva 2002/95/EC

Prodotti conformi alla direttiva 1907/2006

Technical specifications

<i>fluid types</i>	<i>gas and liquid suitable with construction materials</i>
<i>construction materials</i>	<i>case: Inox AISI 304 spring & hub: brass</i>
<i>threads</i>	<i>parallel gas BSPP from G1/8" to G1/4"</i>
<i>max working pressure</i>	<i>max 3/4 of the value of full scale for static pressure. max 2/3 of the value of full scale for knock pressure 100% of the value scale for a short time</i>
<i>room temperature</i>	<i>from -20°C to +60°C</i>
<i>working temperature</i>	<i>max 60°C</i>
<i>protection degree</i>	<i>IP 65 (EN 60 529) IP 54 (25 bar) allow air to escape on case</i>

products in compliance with the directive 2002/95/EC

products in compliance with the directive 1907/2006

I dati tecnici e le quote non sono vincolanti • drawings and technical data are not binding

manometro in glicerina con cassa INOX AISI 304, perno e molla in ottone, attacco radiale, filetto cilindrico BSPP, a norma EN 837-1 / 7,3
 filled pressure gauge with INOX AISI 304 case, spring & hub in brass, bottom connection, BSPP thread, according to directive EN 837-1 / 7,3

MXBR



CODE	Filetto Attacco connection thread	Ø Cassa Ø case	Scala - range (Bar PSI)	Precisione accuracy	
MXBR40G0135	G1/8"	40	0-4	Classe class 2,5	1
MXBR40G0136	G1/8"		0-6		1
MXBR40G0137	G1/8"		0-10		1
MXBR40G0139	G1/8"		0-16		1
MXBR40G0140	G1/8"		0-25		1
MXBR40G0142	G1/8"		0-60		1
MXBR40G0143	G1/8"		0-100		1
MXBR40G0144	G1/8"		0-160		1
MXBR40G0145	G1/8"		0-250		1
MXBR40G0147	G1/8"		0-400		1
MXBR50G0234	G1/4"	50	0-2,5	Classe class 2,5	1
MXBR50G0235	G1/4"		0-4		1
MXBR50G0236	G1/4"		0-6		1
MXBR50G0237	G1/4"		0-10		1
MXBR50G0239	G1/4"		0-16		1
MXBR50G0240	G1/4"		0-25		1
MXBR50G0241	G1/4"		0-40		1
MXBR50G0242	G1/4"		0-60		1
MXBR50G0243	G1/4"		0-100		1
MXBR50G0244	G1/4"		0-160		1
MXBR50G0245	G1/4"	0-250	1		
MXBR50G0247	G1/4"	0-400	1		
MXBR63G0220	G1/4"	63	-1-0	Classe class 1,6	1
MXBR63G0232	G1/4"		0-1,0		1
MXBR63G0233	G1/4"		0-1,6		1
MXBR63G0234	G1/4"		0-2,5		1
MXBR63G0235	G1/4"		0-4		1
MXBR63G0236	G1/4"		0-6		1
MXBR63G0237	G1/4"		0-10		1
MXBR63G0239	G1/4"		0-16		1
MXBR63G0240	G1/4"		0-25		1
MXBR63G0241	G1/4"		0-40		1
MXBR63G0242	G1/4"	0-60	1		
MXBR63G0243	G1/4"	0-100	1		
MXBR63G0244	G1/4"	0-160	1		
MXBR63G0245	G1/4"	0-250	1		
MXBR63G0246	G1/4"	0-315	1		
MXBR63G0247	G1/4"	0-400	1		
MXBR63G0248	G1/4"	0-600	1		
MXBR63G0250	G1/4"	0-1000	1		

MANOMETRI • pressure gauges

manometro in glicerina con cassa INOX AISI 304, perno e molla in ottone, attacco posteriore, filetto cilindrico BSPP, a norma EN 837-1 / 7,3
filled pressure gauge with INOX AISI 304 case, spring & hub in brass, back connection, BSPP thread, according to directive EN 837-1 / 7,3

MXBP



CODE	Filetto Attacco connection thread	Ø Cassa Ø case	Scala - range (Bar PSI)	Precisione accuracy	
MXBP40G0135	G1/8"	40	0-4	Classe class 2,5	1
MXBP40G0136	G1/8"		0-6		1
MXBP40G0137	G1/8"		0-10		1
MXBP40G0139	G1/8"		0-16		1
MXBP40G0140	G1/8"		0-25		1
MXBP40G0142	G1/8"		0-60		1
MXBP40G0143	G1/8"		0-100		1
MXBP40G0144	G1/8"		0-160		1
MXBP40G0145	G1/8"		0-250		1
MXBP40G0147	G1/8"		0-400		1
MXBP40G0148	G1/8"		0-600		1
MXBP50G0234	G1/4"		50		0-2,5
MXBP50G0235	G1/4"	0-4		1	
MXBP50G0236	G1/4"	0-6		1	
MXBP50G0237	G1/4"	0-10		1	
MXBP50G0239	G1/4"	0-16		1	
MXBP50G0240	G1/4"	0-25		1	
MXBP50G0241	G1/4"	0-40		1	
MXBP50G0242	G1/4"	0-60		1	
MXBP50G0243	G1/4"	0-100		1	
MXBP50G0244	G1/4"	0-160		1	
MXBP50G0245	G1/4"	0-250		1	
MXBP50G0247	G1/4"	0-400		1	
MXBP63G0220	G1/4"	63	-1-0	Classe class 1,6	1
MXBP63G0232	G1/4"		0-1,0		1
MXBP63G0233	G1/4"		0-1,6		1
MXBP63G0234	G1/4"		0-2,5		1
MXBP63G0235	G1/4"		0-4		1
MXBP63G0236	G1/4"		0-6		1
MXBP63G0237	G1/4"		0-10		1
MXBP63G0239	G1/4"		0-16		1
MXBP63G0240	G1/4"		0-25		1
MXBP63G0241	G1/4"		0-40		1
MXBP63G0242	G1/4"		0-60		1
MXBP63G0243	G1/4"		0-100		1
MXBP63G0244	G1/4"	0-160	1		
MXBP63G0245	G1/4"	0-250	1		
MXBP63G0246	G1/4"	0-315	1		
MXBP63G0247	G1/4"	0-400	1		
MXBP63G0248	G1/4"	0-600	1		
MXBP63G0250	G1/4"	0-1000	1		

manometro in glicerina con flangia a 3 fori, cassa INOX AISI 304, perno e molla in ottone, filetto cilindrico BSPP, a norma EN 837-1 / 7,3
filled pressure gauge with 3 holes flange and INOX AISI 304 case, spring & hub in brass, BSPP thread, according to directive EN 837-1 / 7,3

MXBF



CODE	Filetto Attacco connection thread	Ø Cassa Ø case	Scala - range (Bar PSI)	Precisione accuracy	
MXBF63G0220	G1/4"	63	-1-0	Classe class 1,6	1
MXBF63G0232	G1/4"		0-1,0		1
MXBF63G0233	G1/4"		0-1,6		1
MXBF63G0234	G1/4"		0-2,5		1
MXBF63G0235	G1/4"		0-4		1
MXBF63G0236	G1/4"		0-6		1
MXBF63G0237	G1/4"		0-10		1
MXBF63G0239	G1/4"		0-16		1
MXBF63G0240	G1/4"		0-25		1
MXBF63G0241	G1/4"		0-40		1
MXBF63G0242	G1/4"		0-60		1
MXBF63G0243	G1/4"		0-100		1
MXBF63G0244	G1/4"	0-160	1		
MXBF63G0245	G1/4"	0-250	1		
MXBF63G0246	G1/4"	0-315	1		
MXBF63G0247	G1/4"	0-400	1		
MXBF63G0248	G1/4"	0-600	1		
MXBF63G0250	G1/4"	0-1000	1		

manometro in glicerina con staffa, cassa INOX AISI 304, perno e molla in ottone, filetto cilindrico BSPP, a norma EN 837-1 / 7,3
filled pressure gauge with back clamp and INOX AISI 304 case, spring & hub in brass, BSPP thread, according to directive EN 837-1 / 7,3

MXBS



CODE	Filetto Attacco connection thread	Ø Cassa Ø case	Scala - range (Bar)	Precisione accuracy	
MXBS63G0220	G1/4"	63	-1-0	Classe class 1,6	1
MXBS63G0232	G1/4"		0-1,0		1
MXBS63G0233	G1/4"		0-1,6		1
MXBS63G0234	G1/4"		0-2,5		1
MXBS63G0235	G1/4"		0-4		1
MXBS63G0236	G1/4"		0-6		1
MXBS63G0237	G1/4"		0-10		1
MXBS63G0239	G1/4"		0-16		1
MXBS63G0240	G1/4"		0-25		1
MXBS63G0241	G1/4"		0-40		1
MXBS63G0242	G1/4"		0-60		1
MXBS63G0243	G1/4"		0-100		1
MXBS63G0244	G1/4"	0-160	1		
MXBS63G0245	G1/4"	0-250	1		
MXBS63G0246	G1/4"	0-315	1		
MXBS63G0247	G1/4"	0-400	1		
MXBS63G0248	G1/4"	0-600	1		
MXBS63G0250	G1/4"	0-1000	1		

MANOMETRI TUTTO INOX PER LA CHIMICA

stainless steel pressure gauges for chemistry

AISI 316

APPLICAZIONI • Applications

Per gas e liquidi che non sono altamente viscosi, non cristallizzano e non sono aggressivi per la lega di rame.

Per misurare punti soggetti a vibrazioni e alte pressioni. Per misurare gas o vapori, questi strumenti devono essere utilizzati in conformità con le norme EN 837-1 / 7,3.

For gas and liquid media which are not highly viscous, do not crystallize and are not aggressive to copper alloys.

For measuring the subject to vibration and high pressure. For measuring gas or vapour these instruments must be used in accordance with the safety recommendations of EN 837-1 / 7,3.

DATI TECNICI

Fluidi compatibili	Gas e liquidi compatibili con i materiali costruttivi
Materiali costruttivi	Cassa: Inox AISI 304 Perno e Molla: Inox AISI 316
Filettature	Gas Cilindrico BSPP da 1/4" a 1/2"
Pressione d'esercizio max	max 3/4 del valore del fondo scala per pressioni statiche. max 2/3 del valore di fondo scala per pressioni a colpo d'ariete 100% del valore di fondo scala per breve tempo
Temperatura ambiente	max 60°C
Temperatura d'esercizio	da -20°C a +150°C
Grado di protezione	IP 65 (EN 60 529) IP 54 (25 bar) per sfiato dal tappino sulla cassa

Technical specifications

fluid types	gas and liquid suitable with construction material
construction materials	case: Inox AISI 304 spring & hub:Inox AISI 316
threads	parallel gas BSPP from 1/4" to 1/2"
max working pressure	max 3/4 of the value of full scale for static pressure. max 2/3 of the value of full scale for knock pressure 100% of the value scale for a short time
room temperature	max 60°C
working temperature	from -20°C to +150°C
protection degree	IP 65 (EN 60 529) IP 54 (25 bar) allow air to escape on case

Prodotti conformi alla direttiva 2002/95/EC **RoHS**

Prodotti conformi alla direttiva 1907/2006 

products in compliance with the directive 2002/95/EC **RoHS**


products in compliance with the directive 1907/2006 

I dati tecnici e le quote non sono vincolanti • drawings and technical data are not binding

manometro tutto inox a secco per la chimica, cassa INOX AISI 304, perno e molla in INOX AISI 316, attacco radiale, filetto cilindrico BSPP, a norma EN 837-1 / 7,3
stainless steel unfilled pressure gauge for the chemistry with INOX AISI 304 case, spring & hub in INOX AISI 316, bottom connection, BSPP thread, according to directive EN 837-1 / 7,3

MXXR



CODE	Filetto Attacco connection thread	Ø Cassa Ø case	Scala - range (Bar)	Precisione accuracy	
MXXR63G0220	G1/4"	63	-1-0	Classe class 1,6	1
MXXR63G0232	G1/4"		0-1,0		1
MXXR63G0233	G1/4"		0-1,6		1
MXXR63G0234	G1/4"		0-2,5		1
MXXR63G0235	G1/4"		0-4		1
MXXR63G0236	G1/4"		0-6		1
MXXR63G0237	G1/4"		0-10		1
MXXR63G0239	G1/4"		0-16		1
MXXR63G0240	G1/4"		0-25		1
MXXR63G0241	G1/4"		0-40		1
MXXR63G0242	G1/4"		0-60		1
MXXR63G0243	G1/4"		0-100		1
MXXR63G0244	G1/4"		0-160		1
MXXR63G0245	G1/4"		0-250		1
MXXR100G0220	G1/2"	100	-1-0	Classe class 1,0	1
MXXR100G0432	G1/2"		0-1,0		1
MXXR100G0433	G1/2"		0-1,6		1
MXXR100G0434	G1/2"		0-2,5		1
MXXR100G0435	G1/2"		0-4		1
MXXR100G0436	G1/2"		0-6		1
MXXR100G0437	G1/2"		0-10		1
MXXR100G0439	G1/2"		0-16		1
MXXR100G0440	G1/2"		0-25		1
MXXR100G0441	G1/2"		0-40		1
MXXR100G0442	G1/2"		0-60		1
MXXR100G0443	G1/2"		0-100		1


AISI 316

MANOMETRI • pressure gauges

manometro tutto inox a secco per la chimica, cassa INOX AISI 304, perno e molla in INOX AISI 316, attacco posteriore, filetto cilindrico BSPP, a norma EN 837-1 / 7,3
 stainless steel unfilled pressure gauge for the chemistry with INOX AISI 304 case, spring & hub in INOX AISI 316, back connection, BSPP thread, according to directive EN 837-1 / 7,3

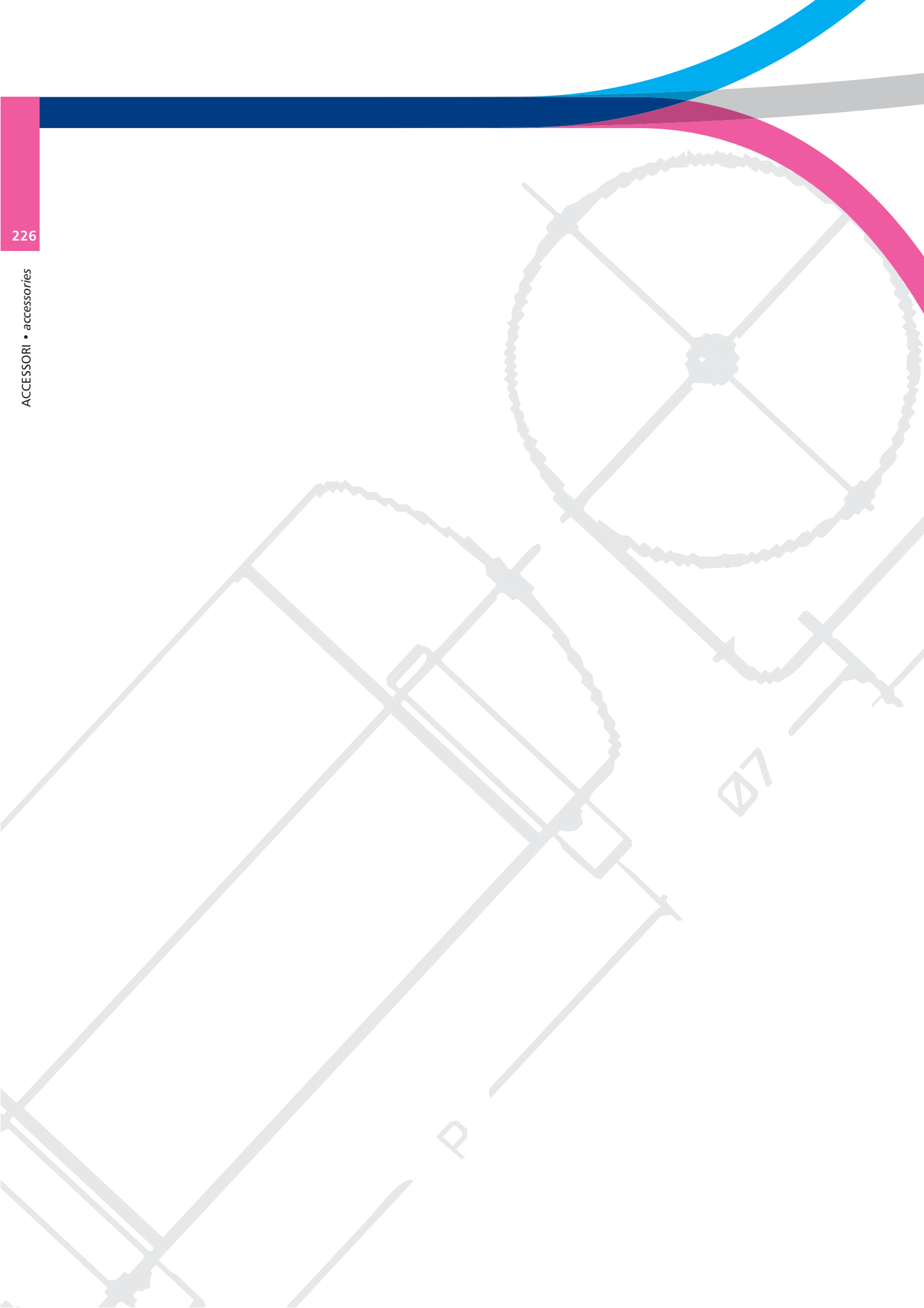
MXXP



CODE	Filetto Attacco connection thread	Ø Cassa Ø case	Scala - range (Bar)	Precisione accuracy	
MXXP63G0220	G1/4"	63	-1-0	Classe class 1,6	1
MXXP63G0232	G1/4"		0-1,0		1
MXXP63G0233	G1/4"		0-1,6		1
MXXP63G0234	G1/4"		0-2,5		1
MXXP63G0235	G1/4"		0-4		1
MXXP63G0236	G1/4"		0-6		1
MXXP63G0237	G1/4"		0-10		1
MXXP63G0239	G1/4"		0-16		1
MXXP63G0240	G1/4"		0-25		1
MXXP63G0241	G1/4"		0-40		1
MXXP63G0242	G1/4"		0-60		1
MXXP63G0243	G1/4"		0-100		1
MXXP63G0244	G1/4"		0-160		1
MXXP63G0245	G1/4"		0-250		1

AISI 316





SERBATOI • tanks

LEGENDA CODICE • Model designation

SB	304	TR	100	190	STU
↓	↓		↓	↓	↓
Codice code	Materiale AISI 304 material AISI 304		Diametro diameter	Altezza height	Tipo di fissaggio type fixing

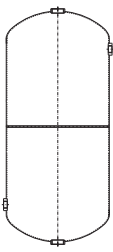


Serbatoio per aria compressa in Acciaio Inox AISI 304 per uso alimentare.
Qualifica di saldatura bureau veritas WPAR n° 2374, n° 2375, n° 2376 secondo norma EN 15614-1/1418/287-1

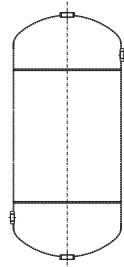
Tank for compressed air in Stainless Steel AISI 304 for food.
Qualification welding bureau veritas WPAR No. 2374, No. 2375, No. 2376 according to standard EN 15614-1/1418/287-1



A



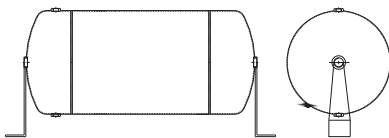
B



- A:** Serbatoio a due calotte, una bordata ed una rifilata con saldatura al TIG (2 pezzi)
B: Serbatoio a due calotte bordate con mantello centrale saldato al TIG longitudinale (3 pezzi)

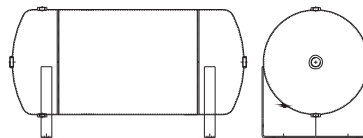
- A:** tank two caps, a fishing trip and a cropped with the TIG welding (2 pieces)
B: tank caps to two trips with cloak central to TIG welded longitudinal (3 pieces)

STL



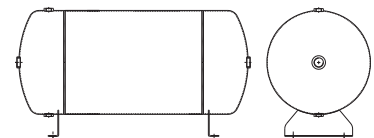
Staffa fornita a parte
bracket provided separately

STU



Staffa fornita già montata
bracket provided already mounted

STC



Staffa fornita già montata
bracket provided already mounted

A richiesta si costruiscono serbatoi speciali:

- a disegno del cliente
- PN 20
- In AISI 316
- Con lucidatura a specchio
- Con decapaggio per settore farmaceutico / medicale.
- Sgrassato per utilizzo con ossigeno

Available on demand:

- on customer's drawing
- PN 20
- In AISI 316
- with polishing mirror
- with pickling for the medical / pharmaceutical sector
- de-greased for use with oxigene

Prodotti conformi alla direttiva 2002/95/EC **RoHS**

products in compliance with the directive 2002/95/EC **RoHS**

Prodotti conformi alla direttiva 1907/2006 **REACH**

products in compliance with the directive 1907/2006 **REACH**

I dati tecnici e le quote non sono vincolanti • drawings and technical data are not binding

SERBATOIO • tanks

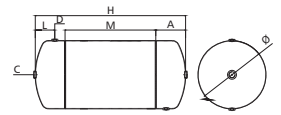
serbatoio in Acciaio INOX AISI 304 • stainless steel AISI 304 tank

SB304TR



CODE	Fig.	Ø	H	Vol Lt.	L	M	A	D	C	PN	Peso Weight(g)	
SB304TR088200	A	88	200	1	-	-	100	-	1/4"	10 Bar	500	1
SB304TR100190	A	100	190	1,4	-	-	95	-	1/4"	10 Bar	500	1
SB304TR130100	A	130	100	1	-	-	50	-	1/4"	10 Bar	1600	1
SB304TR130130	A	130	130	1,5	-	-	75	-	1/4"	10 Bar	1800	1
SB304TR130175	A	130	175	2	40	-	88	1/4"(1)	1/4"	10 Bar	2000	1
SB304TR150350	A	150	350	6	50	-	175	1/4"(2)	1/2"	10 Bar	2000	1
SB304TR160220	A	160	220	4,5	50	-	110	1/4"(2)	1/2"	10 Bar	1600	1
SB304TR190330	A	190	330	9	70	-	165	1/4"(2)	1/2"	10 Bar	2500	1
SB304TR190420	B	190	420	12	70	90	165	1/4"(2)	1/2"	10 Bar	3000	1
SB304TR220540	B	220	550	20	70	260	145	1/4"(2)	1/2"	10 Bar	3500	1
SB304TR245400	A	245	400	19	70	-	200	1/4"(2)	1/2"	10 Bar	4200	1
SB304TR245540	B	245	540	24	70	330	-	1/4"(2)	1/2"	8 Bar	6500	1
SB304TR330590	B	330	590	50	150	350	115	1/4"(2)	1/2"	8 Bar	11000	1

AISI 304



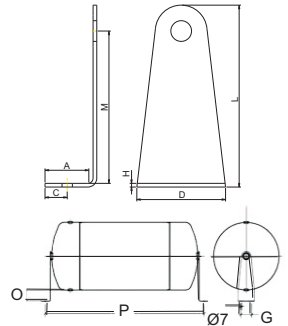
staffa a L per serbatoio in Acciaio INOX AISI 304 • L-bracket for stainless steel AISI 304 tank

STL



CODE	Compatibile con suitable for	Fig.	Ø	H	L	M	A	D	C	G	P	O	Peso Weight(g)	
STL130	SB304TR130100	A	130	2	123	103	29	60	15	40	130	38	108	
	SB304TR130130	A	130										160	
	SB304TR130175	A	130										205	
	SB304TR150350	A	150								380	55	1	
STL190	SB304TR160220	A	160	2	150	133	29	60	15	40	250	50	125	
	SB304TR190330	A	190											360
	SB304TR190420	B	190											450
	SB304TR220540	B	220								580	46	1	
STL245	SB304TR245400	A	245	2	178	158	29	60	15	40	430	38	178	
	SB304TR245540	B	245											570

AISI 304



staffa e serbatoio forniti non assemblati • bracket and tank supplied not assembled

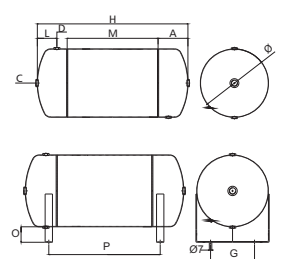
serbatoio in Acciaio INOX AISI 304 con staffa a U • stainless steel AISI 304 with U-brackets tank

SB304TR-STU



CODE	Fig.	Ø	H	Vol Lt.	L	M	A	D	C	G	P	O	PN	Peso Weight(g)	
SB304TR160220-STU	A	160	220	4,5	50	-	110	1/4"	1/2"	100	110	38	10 Bar	1600	1
SB304TR190330-STU	A	190	330	9	70	-	165	1/4"	1/2"	120	200		10 Bar	2500	1
SB304TR190420-STU	B	190	420	12	70	90	165	1/4"	1/2"	120	200		10 Bar	3000	1
SB304TR220540-STU	B	220	550	20	70	260	145	1/4"	1/2"	150	380		10 Bar	3500	1
SB304TR245400-STU	A	245	400	19	70	-	200	1/4"	1/2"	-	300		10 Bar	4200	1
SB304TR245540-STU	B	245	540	24	70	330	-	1/4"	1/2"	150	380	8 Bar	6500	1	

AISI 304



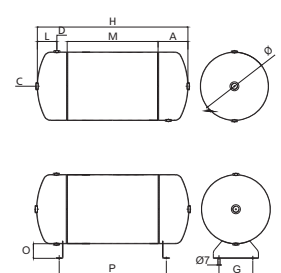
serbatoio in Acciaio INOX AISI 304 con staffa a culla • stainless steel AISI 304 tank with cradle bracket

SB304TR-STC



CODE	Fig.	Ø	H	Vol Lt.	L	M	A	D	C	G	P	O	PN	Peso Weight(g)	
SB304TR220540-STC	B	220	540	20	70	260	145	1/4"	1/2"	120	300	38	10 Bar	3500	1
SB304TR245540-STC	B	245	540	24	70	330	-	1/4"	1/2"	150	420		8 Bar	6500	1
SB304TR330590-STC	B	330	590	50	150	350	115	1/4"	1/2"	230	440		8 Bar	11000	1

AISI 304



ELEMENTI DI TENUTA PER FILETTI

sealing for threaded elements

SIGILLAFILETTI AL PTFE OMOLOGATO GAS E ACQUA POTABILE

PTFE pipe sealant gas and potable water approved

DESCRIZIONE • Description

Adesivo anaerobico per sigillare giunzioni metalliche filettate.
Indicato per sigillare GAS, GPL, aria compressa, olio e carburanti, fluidi industriali, CFC, acqua potabile e diverse sostanze chimiche.
Il basso coefficiente di attrito assicura un agevole montaggio, l'effetto tixotropico impedisce la colatura del sigillante durante l'indurimento.
Sostituisce nastri P.T.F.E. e in canapa. Il prodotto indurito forma un film elastico.
Resiste agli urti, alle vibrazioni, agli sbalzi termici e mantiene le proprietà sigillanti nel campo di temperatura da -55°C a +150°C.

*Anaerobic adhesive for sealing of metal thread pipe joints.
Approved for natural gas, LPG, compressed air, oil and fuels, industrial fluids, CFC, potable water & other chemicals.
Low friction coefficient assures easy assembly, thixotropic property prevents migration from thread of the sealant before or during curing.
It replaces P.T.F.E. tape and yarn. It gives instant sealing against moderate pressure and gives elastic cured film.
Shocks and vibrations resistances are unaffected properties of sealing in the range of temperature from -55°C to +150°C.*

DATI TECNICI

Tempo di manipolazione	20 - 40 minuti
Tempo di indurimento funzionale	1 - 3 ore
Diametro gioco max (mm)	2" - 0,30
Momento torcente M10 (N.m)	7 - 10
Temperatura di impiego	da -55°C a +150°C
Approvazioni per gas naturale e GPL	Europa: approvato secondo EN 751-1 da DIN-DVGW nr. NG5146AR0574 da -20°C a +150°C fino a 2" di diametro Australia: approvato da AGA nr. 5047 fino a 10 bar e 2" di diametro Germania: omologato TZW-DVGW per acqua fredda e calda (85°C) Inghilterra: omologato BS6920:2000 da WRAS per impiego con acqua fredda e calda (85°C)
Approvazione per acqua potabile	

Prodotti conformi alla direttiva 2002/95/EC 

Prodotti conformi alla direttiva 1907/2006 

Technical specifications

handling time	20 - 40 minutes
functional curing time	1 - 3 hours
max gap filling (mm)	2" - 0,30
locking torque M10 (N.m)	7 - 10
working temperature	from -55°C to +150°C
approved for natural gas and LPG in vapour state	Europe: according to norm EN751-1 approved by DIN-DVGW n° NG 5146AR0574 from -20° C to +150° C up to 2" pipe. Australia: approved AGA n.5047 up to 10 bar and 2" pipe. Germany: by DVGW according to TZW regulation for hot and cold water (85°C) England: by WRAS according to BS6920: 2000 regulation for hot and cold water (85°C)
approved for potable water	

products in compliance with the directive 2002/95/EC 

products in compliance with the directive 1907/2006 

I dati tecnici e le quote non sono vincolanti • drawings and technical data are not binding

sigillante anaerobico al PTFE per raccordi e tubazioni a bassa resistenza meccanica
low strength PTFE anaerobic adhesive for sealing of metal thread pipe joints

LOX1810

CODE

Contenitore - container



LOX1810

flacone soft da 75 ml
soft bottle 75 ml

1



SIGILLAFILETTI A FRENATURA MEDIA OMOLOGATO GAS, GPL, OSSIGENO E ACQUA POTABILE

semipermanent pipe sealant approved gas, LP gas, oxygen and potable water

DESCRIZIONE • Description

Adesivo anaerobico per sigillare giunzioni metalliche filettate. Indicato per sigillare gas, GPL, aria compressa, olio e carburanti, fluidi industriali, CFC, acqua potabile e diverse sostanze chimiche.

Il basso coefficiente di attrito assicura un agevole montaggio, l'effetto tixotropico impedisce la colatura del sigillante durante l'indurimento. Sostituisce nastri P.T.F.E. e canapa. Il prodotto indurito forma un film tenace a media resistenza di smontaggio. Resiste agli urti, alle vibrazioni, agli sbalzi termici e mantiene le proprietà sigillanti nel campo di temperatura da -55°C a +150°C.

Anaerobic curing adhesive for the sealing of metallic thread joints.

Suitable for sealing GAS, LPG, compressed air, oil and fuels, industrial fluids, CFC, potable water & other chemicals.

Low friction coefficient assures easy assembly, thixotropic property prevents migration from thread of the sealant before or during curing. It replaces P.T.F.E. tape and yarn. It gives instant sealing against moderate pressure and gives elastic cured film. Shocks and vibrations resistances are

DATI TECNICI

Tempo di manipolazione	15 - 30 minuti
Tempo di indurimento funzionale	1 - 2 ore
Diametro gioco max (mm)	2" - 0,30
Momento torcente M10 (N.m)	18 - 22
Temperatura di impiego	da -55°C a +150°C
Approvazioni per gas naturale e GPL	Europa: approvato secondo EN 751-1, DIN-DVGW nr. NG5146AU0039 da -20°C a +150°C fino a 2" di diametro Australia: approvato da AGA nr. 5048 fino a 26 bar e 2" di diametro
Approvazione per acqua potabile	Inghilterra: omologato BS6920:2000 da WRAS per impiego con acqua fredda. Lasciare indurire le parti per 24 ore prima dell'impiego su acqua potabile
Approvazione per ossigeno gassoso	Germania: omologato da BAM fino a 10 bar e 60°C (1432/95 4-755)

Technical specifications

<i>handling time</i>	<i>15 - 30 minutes</i>
<i>functional curing time</i>	<i>1 - 2 hours</i>
<i>max gap filling (mm)</i>	<i>2" - 0,30</i>
<i>locking torque M10 (N.m)</i>	<i>18 - 22</i>
<i>working temperature</i>	<i>from -55°C to +150°C</i>
<i>approvals for natural gas and LPG in vapour state</i>	<i>Europe: according to norm EN751-1 approved by DIN-DVGW NG5146AU0039 from -20° C to +150° C up to 2" pipe. Australia: approved AGA n.5048 up to 26 bars and 2" pipe.</i>
<i>approved for potable water</i>	<i>England: by WRAS according to BS6920:2000 regulation for cold water. Leave to harden the parts for 24 hours before the use with potable water.</i>
<i>approval for pure oxygen</i>	<i>Germany: by BAM up to 10 bar and 60°C (1432/95 4-755)</i>

Prodotti conformi alla direttiva 2002/95/EC **RoHS**

products in compliance with the directive 2002/95/EC **RoHS**

Prodotti conformi alla direttiva 1907/2006 

products in compliance with the directive 1907/2006 

I dati tecnici e le quote non sono vincolanti • *drawings and technical data are not binding*

sigillante anaerobico a media resistenza omologato gas, GPL, ossigeno e acqua potabile per giunzioni filettate metalliche fino a 2" *medium strength anaerobic curing adhesive for sealing of thread metallic joints up to 2". Suitable for gas, oxygen & potable water*

LOX5811

CODE

Contenitore - container



LOX5811

flacone soft da 75 ml
soft bottle 75 ml

1



SIGILLARACCORDI PER TUBAZIONI IN PLASTICA

fittings sealant for plastic tubes

guarnizione liquida - *liquid adhesive*

LOC5331



CODE	Descrizione • <i>description</i>	Contenitore • <i>container</i>	
LOC5331	Guarnizione liquida per raccordi filettati e tubazioni in plastica. Utilizzo con acqua potabile fino a 85°C <i>Liquid adhesive for threaded fittings & plastic tubes. To use with potable water up to 85°C</i>	Tubo da 100 gr <i>tube 100 gr</i>	1

SIGILLAFIETTI FLUIDO PER PNEUMATICA ED OLEODINAMICA

OMOLOGATO GAS

threadsealant for pneumatics and hydraulics gas approved

DESCRIZIONE • *Description*

Adesivo anaerobico per metalli a media resistenza meccanica per sigillare raccordi idraulici e pneumatici fino a 3/4". Per la sigillatura di gas, acqua, GPL, idrocarburi, olii e svariati agenti chimici. E' omologato per gas a norma DIN-DVGW cert. n°. NG-5146AU0038.A. E' smontabile con normali utensili. Altamente resistente alla temperatura, alla corrosione, agli urti ed alle vibrazioni.

Medium strength anaerobic adhesive for metals and for sealing hydraulic and pneumatics threads connectors up to 3/4". To replace P.T.F.E. tapes in the sealing of gases, water, LPG, hydrocarbons, oils and other chemicals. Easy to dismantle with standard tools. Highly resistant to heat, corrosion, shocks and vibrations. DIN-DVGW approved cert. n° NG-5146AU0038.A. for gas.

DATI TECNICI

Tempo di manipolazione	10 - 20 minuti
Tempo di indurimento funzionale	1 - 3 ore
Diametro gioco max (mm)	3/4" - 0,15
Momento torcente M10 (N.m)	12 - 16
Temperatura di impiego	da -55°C a +150°C


Technical specifications

<i>handling time</i>	10 - 20 minutes
<i>functional curing time</i>	1 - 3 hours
<i>max gap filling (mm)</i>	3/4" - 0,15
<i>locking torque M10 (N.m)</i>	12 - 16
<i>working temperature</i>	from -55°C to +150°C

Prodotti conformi alla direttiva 2002/95/EC 

products in compliance with the directive 2002/95/EC 

Prodotti conformi alla direttiva 1907/2006 

products in compliance with the directive 1907/2006 

I dati tecnici e le quote non sono vincolanti • *drawings and technical data are not binding*

sigillante anaerobico fluido per raccordi pneumatici ed idraulici fino a 3/4" a media resistenza meccanica
medium strength anaerobic liquid adhesive for sealing hydraulic and pneumatics threads connectors up to 3/4"

LOX5314



CODE	Contenitore - <i>container</i>	
LOX5314	flacone da 50 ml <i>bottle 50 ml</i>	1

BLOCCABULLONI MEDIO OLEOTOLLERANTE SERRAFIETTI OMOLOGATO GAS E ACQUA POTABILE

*oil tolerant nuts and bolts locking
threadsealant gas and potable water approved*

DESCRIZIONE • Description

Adesivo anaerobico per metalli a media resistenza per il bloccaggio di dadi e bulloni ed altre parti filettate che richiedono di essere smontati. Indicato anche per impiego di superfici oleose.
Altamente resistente alla temperatura, alla corrosione, alle vibrazioni, all'acqua, ai gas, agli olii e carburanti ed a molti agenti chimici. Omologato per gas DIN-DVGW norma Europea DIN EN 751 Reg. Nr. NG-5146AU0399 e GAZ DE FRANCE.
Approvato per impiego con acqua potabile TZW-DVGW.

*Medium strength anaerobic adhesive for thread locking of nuts and bolts of all types that require to be dismantled.
Suitable to be used on metal oily surfaces.
Highly resistant to heat, corrosion, vibrations, water, gas, oils, hydrocarbons and other chemicals.
Approved for gas (DVGW nr. NG-5146AU0399) European norm EN 751-1 and GAZ DE FRANCE.
Approved for potable water TZW - DVGW.*

DATI TECNICI

Tempo di manipolazione	10 - 20 minuti
Tempo di indurimento funzionale	1 - 3 ore
Diametro gioco max (mm)	M36 - 0,25
Momento torcente M10 (N.m)	17 - 22
Temperatura di impiego	da -55°C a +150°C

Technical specifications

<i>handling time</i>	<i>10 - 20 minutes</i>
<i>functional curing time</i>	<i>1 - 3 hours</i>
<i>max gap filling (mm)</i>	<i>M36 - 0,25</i>
<i>locking torque M10 (N.m)</i>	<i>17 - 22</i>
<i>working temperature</i>	<i>from -55°C to +150°C</i>

Prodotti conformi alla direttiva 2002/95/EC 

products in compliance with the directive 2002/95/EC 

Prodotti conformi alla direttiva 1907/2006 

products in compliance with the directive 1907/2006 

I dati tecnici e le quote non sono vincolanti • *drawings and technical data are not binding*

frenafilietti anaerobico per metalli oleocompatibile a media resistenza meccanica
medium strength anaerobic adhesive for thread locking of nuts and bolts, suitable to be used on metal oily surfaces

LOX5503

CODE

Contenitore - container



LOX5503

flacone da 50 ml
bottle 50 ml

1



SIGILLANTE IN SILICONE • *silicone sealant*

DESCRIZIONE • *Description*

Adesivo sigillante siliconico monocomponente non corrosivo, polimerizza per reazione con l'umidità atmosferica, forma una guarnizione estremamente flessibile fra superfici di materiali anche diversi tra loro (metalli, plastiche, vetro, ceramiche, ecc.).

E' indicato per la sigillatura di scatole di ingranaggi, cambi differenziali, flangie di pompe e di motori, serbatoi d'acqua e olio, condotte d'aria forzata. Resiste a vibrazioni, sbalzi termici, aria compressa, acqua, gas, GPL, olii e svariati agenti chimici.

Mantiene le sue proprietà sigillanti nel campo di temperatura da -50°C a +180°C.

Gli accoppiamenti sigillati si possono smontare con i normali utensili.

One component moisture silicone based sealant and adhesive releasing non corrosive and odourless by-products.

Provides an extremely flexible gasket between surfaces made of various materials (metals, plastics, glass, ceramics).

Suitable for sealing gear boxes, pumps and motors flanges, oil and water containers, and air forced pipes.

Resistant to vibrations, thermal shocks, pressurized air, water, gas, LPG, oils and several chemicals.

Keeps its sealing properties within temperatures of -55° and +180°C.

Sealed parts can be disassembled using normal tools.

DATI TECNICI

Tempo di indurimento funzionale	3 - 6 ore
Spessore massimo (mm)	0,60 - 3
Resistenza a trazione (N/mm ²)	1,8 - 3
Temperatura di impiego	da -55°C a +180°C

Technical specifications

<i>functional curing time</i>	<i>3 - 6 hours</i>
<i>maximum thickness (mm)</i>	<i>0,60 - 3</i>
<i>tensile strength (N/mm²)</i>	<i>1,8 - 3</i>
<i>working temperature</i>	<i>from -55°C to +180°C</i>

Prodotti conformi alla direttiva 2002/95/EC **RoHS**

products in compliance with the directive 2002/95/EC **RoHS**

Prodotti conformi alla direttiva 1907/2006 

products in compliance with the directive 1907/2006 

I dati tecnici e le quote non sono vincolanti • *drawings and technical data are not binding*

silicone trasparente ossifco inodore ad alta resistenza agli olii.
highly oil resistant, transparent, silicone sealant

LOX5920

CODE

Contenitore - container



LOX5920

cartuccia da 310 ml
cartridge 310 ml

1



ADESIVO INSTANTANEO PER MATERIALI DIFFICILI, SUPERFICI POROSE E A REAZIONE ACIDA

surface insensitive grade for porous and acidic surfaces instant adhesive

DESCRIZIONE • Description

Adesivo istantaneo a base etile-cianoacrilato. Tipo universale a media viscosità insensibile alle superfici a reazione acida. Indicato per il rapido incollaggio di cuoio, legno e metalli

Istant cyanoacrylate adhesive with ethyl grade. Universal type insensitive grade for porous and acidic surfaces. Suitable for speed bonding of leather, wood and metals

DATI TECNICI

Tempo di fissaggio 2" - 5"
Temperatura di impiego da -50°C a +80°C

Technical specifications

speed of bonding 2" - 5"
working temperature from -50°C to +80°C

Prodotti conformi alla direttiva 2002/95/EC 

products in compliance with the directive 2002/95/EC 

Prodotti conformi alla direttiva 1907/2006 

products in compliance with the directive 1907/2006 

I dati tecnici e le quote non sono vincolanti • *drawings and technical data are not binding*

adesivo cianoacrilico universale, rapido, incolore per gomme plastiche, cuoio, legno e metallo.
universal fast setting cyanoacrylate adhesive for plastic rubbers, leather, wood and metals

IS43S

CODE

Contenitore • container



IS43S

flacone da 20 ml
bottle 20 ml

1



NASTRO TEFLON • *teflon tape*

nastro teflon • *teflon tape*

R-PTFE

CODE

Descrizione - description



R-PTFE 12012 Nastro in PTFE da 1/2" - lunghezza 12 mt. - spessore 0,1 mm.
Per utilizzo con aria e acqua in un campo di temperatura da -200°C a +260°C

10

*PTFE tape 1/2" - length 12 mt. - thickness 0,1 mm.
To use with air & water in a temperature range from -200°C to +260°C*



NASTRO TEFLON PER USO PROFESSIONALE

teflon tape for professional use

nastro teflon per utilizzo professionale • *teflon tape for professional use*

R-PTFE-PROF

CODE

Descrizione - description



R-PTFE 190215-PROF Nastro PTFE da 3/4" - lunghezza 15 mt. - spessore 0,2 mm.
Per utilizzo professionale secondo normativa DIN-DVGW, BS 7786 e GASTEC norms da utilizzare in un campo di temperatura da -200°C a +260°C

10

*PTFE tape 3/4" - length 15 mt. - thickness 0,2 mm.
For professional use according to directive DIN - DVGW, BS 7786 and GASTEC norms and to use in a temperature range from -200°C to +260°C*



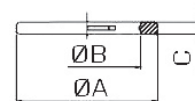
RONDELLE • *washers*

rondella nylon dentellata • *nylon notched washer*

2610



CODE	Filetto thread	A	B	C	Peso (g) weight	
2610TRM5	M5	8,0	5,2	1,3	2,0	100
2610TR18	G1/8"	14,0	10,0	2,0	26,0	100
2610TR14	G1/4"	18,0	13,5	2,0	42,0	100
2610TR38	G3/8"	21,0	16,8	2,0	28,0	100
2610TR12	G1/2"	26,0	21,1	2,0	38,0	100

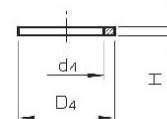


rondella in PVC • *PVC washer*

2612



CODE	Filetto thread	D4	d4	H	Peso (g) weight	
2612TR18	G1/8"	14,0	10,0	1,5	18,0	100
2612TR14	G1/4"	17,5	13,5	1,5	18,0	100
2612TR38	G3/8"	21,0	16,7	1,5	18,0	100
2612TR12	G1/2"	26,0	21,3	1,5	18,0	100

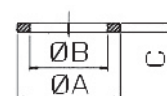


rondella nylon • *nylon washer*

2615



CODE	Filetto thread	A	B	C	Peso (g) weight	
2615TRM5	M5	8,5	5,0	1,5	4,0	100
2615TR18	G1/8"	14,0	9,8	1,5	24,0	100
2615TR14	G1/4"	18,0	13,2	1,5	40,0	100
2615TR38	G3/8"	21,0	16,7	1,5	20,0	100
2615TR12	G1/2"	26,0	21,1	2,0	38,0	100
2615TR34	G3/4"	32,0	26,7	2,5	62,0	100



rondella alluminio • *aluminum washer*

2620



CODE	Filetto thread	A	B	C	Peso (g) weight	
2620TR18	G1/8"	14,0	10,0	1,5	58,0	100
2620TR14	G1/4"	17,3	13,3	1,5	76,0	100
2620TR38	G3/8"	21,0	16,9	1,5	46,0	100
2620TR12	G1/2"	26,0	21,1	1,5	70,0	100

