

REGOLATORI DI FLUSSO IN LINEA • flat flow regulators

REGOLATORI DI FLUSSO IN LINEA INOX AISI 316 flat flow regulators INOX AISI 316

AISI 316

DATI TECNICI

Fluidi compatibili	XSFC-U: Aria XSFC-B: Aria e fluidi compatibili con i materiali costruttivi
Applicazioni	Settore Alimentare, Chimico, Navale, Medica ed applicazioni in ambienti aggressivi
Materiali costruttivi	Acciaio INOX AISI 316 Guarnizione: FKM (Viton)
Filettature	Gas Cilindrica ISO 228 NPT
Pressione d'esercizio	1-16 Bar per i regolatori di flusso unidirezionali XSFC-U 0-40 Bar per i regolatori di flusso bidirezionali XSFC-B
Temperatura d'esercizio	-10°C +120°C per i regolatori di flusso unidirezionali XSFC-U -25°C +120°C per i regolatori di flusso bidirezionali XSFC-B

Technical specifications

fluid types	XSFC-U: air XSFC-B: pneumatics & fluids compatible with construction materials
applications	food, chemical, nautical, medical, pharmaceutical & aggressive applications.
construction materials	stainless steel AISI 316 seal: FKM (Viton)
threads	parallel gas ISO 228 NPT
working pressure	1-16 Bar for unidirectional flow regulators XSFC-U 0-40 Bar for bidirectional flow regulators XSFC-B
working temperature	-10°C +120°C for unidirectional flow regulators XSFC-U -25°C +120°C for bidirectional flow regulators XSFC-B

Prodotti conformi alla direttiva 2002/95/EC **RoHS**

products in compliance with the directive 2002/95/EC **RoHS**

Prodotti conformi alla direttiva 1907/2006 **REACH**

products in compliance with the directive 1907/2006 **REACH**

I dati tecnici e le quote non sono vincolanti • drawings and technical data are not binding

regolatore di flusso unidirezionale filetto femmina cilindrico BSPP INOX AISI 316
unidirectional female flow regulator BSPP thread INOX AISI 316

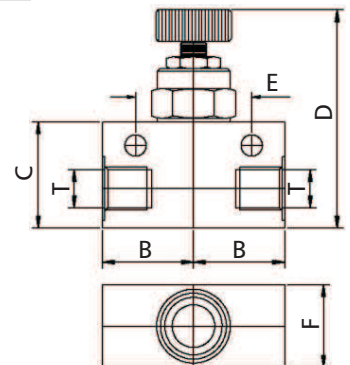
XSFC-U

CODE	T	B	C	D	E	F	Peso weight (g)	
XSFC-U 01	G1/8"	16,0	22,0	47,0	22,0	16,0	250,0	1
XSFC-U 02	G1/4"	27,5	32,0	56,0	31,8	25,0	350,0	1
XSFC-U 03	G3/8"	27,5	32,0	56,0	31,8	25,0	485,0	1
XSFC-U 04	G1/2"	32,0	38,0	62,0	35,0	28,0	625,0	1

AISI 316



unidirezionale
unidirectional



regolatore di flusso unidirezionale filetto femmina NPT INOX AISI 316
unidirectional female flow regulator NPT thread INOX AISI 316

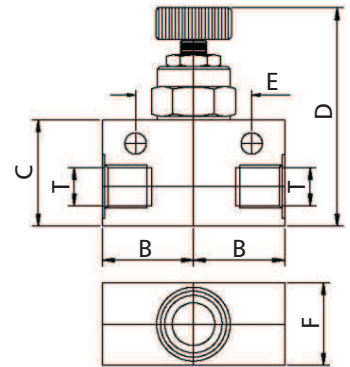
XSFC-U-N

CODE	T	B	C	D	E	F	Peso weight (g)	
XSFC-U-N 02	G1/4"	27,5	32,0	56,0	31,8	25,0	350,0	1
XSFC-U-N 04	G1/2"	32,0	38,0	62,0	35,0	28,0	625,0	1

AISI 316



unidirezionale
unidirectional



regolatore di flusso bidirezionale filetto femmina cilindrico BSPP INOX AISI 316
bidirectional female flow regulator BSPP thread INOX AISI 316

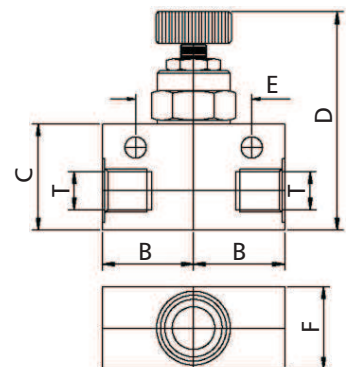
XSFC-B

CODE	T	B	C	D	E	F	Peso weight (g)	
XSFC-B 01	G1/8"	16,0	22,0	47,0	22,0	16,0	250,0	1
XSFC-B 02	G1/4"	27,5	32,0	56,0	31,8	25,0	350,0	1
XSFC-B 03	G3/8"	27,5	32,0	56,0	31,8	25,0	485,0	1
XSFC-B 04	G1/2"	32,0	38,0	62,0	35,0	28,0	625,0	1

AISI 316



bidirezionale
bidirectional



regolatore di flusso bidirezionale filetto femmina cilindrico NPT INOX AISI 316
bidirectional female flow regulator NPT thread INOX AISI 316

XSFC-B-N

CODE	T	B	C	D	E	F	Peso weight (g)	
XSFC-B-N 02	G1/4"	27,5	32,0	56,0	31,8	25,0	350,0	1
XSFC-B-N 04	G1/2"	32,0	38,0	62,0	35,0	28,0	625,0	1

AISI 316



bidirezionale
bidirectional

