



**Tierre Group S.p.a.**  
Via dell'Industria, 18 - 20032 - Cormano (MI) - Italy  
Tel. +39 02 663088.1 - Fax +39 02 66304172  
C.F. e P.IVA 12437570158  
[www.tierregroup.com](http://www.tierregroup.com) - [info@tierregroup.com](mailto:info@tierregroup.com)

---

## INDEX

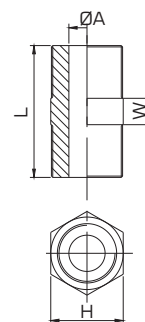
 <b>1410</b> Pag.61	 <b>1412</b> Pag.61	 <b>1420-3P</b> Pag.62	 <b>1425-3P</b> Pag.62	 <b>1425</b> Pag.63	 <b>1426</b> Pag.63	 <b>1440</b> Pag.63
 <b>1450</b> Pag.64	 <b>1455</b> Pag.64	 <b>1469</b> Pag.64	 <b>1475</b> Pag.65	 <b>1480</b> Pag.65	 <b>1485</b> Pag.65	 <b>1490</b> Pag.63

niplo conico BSPT • *nipple BSPT thread*

## 1410



CODE	T	L	W	H (Hex)	
1410MF18	1/8"	20	4	11	10
1410MF14	1/4"	25	4	14,5	10
1410MF38	3/8"	27	5	18,5	10
1410MF12	1/2"	34	5	22,5	10
1410MF34	3/4"	36,5	5,5	28	10
1410MF1	1"	42	6	34	10
1410MF114	1-1/4"	47,5	6,5	44	10
1410MF112	1-1/2"	47,5	6,5	50	10
1410MF2	2"	57	7	62	10

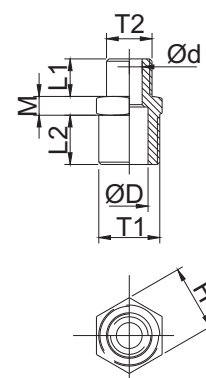


niplo conico ridotto BSPT • *reduced nipple BSPT thread*

## 1412



CODE	T1	T2	L1	L2	M	d	D	H (Hex)	
1412MF1418	1/4"	1/8"	8	10,5	4	5,5	8	14,5	10
1412MF3818	3/8"	1/8"	8	11	5	5,5	11,5	18	10
1412MF3814	3/8"	1/4"	10,5	11	5	8	11,5	18	10
1412MF1214	1/2"	1/4"	10,5	14,5	5	8	15	22	10
1412MF1238	1/2"	3/8"	11	14,5	5	11,5	15	22	10
1412MF3438	3/4"	3/8"	11	15,5	5,5	11,5	20,5	28	10
1412MF3412	3/4"	1/2"	14,5	15,5	5,5	15	20,5	28	10
1412MF138	1"	3/8"	11	18	6	11,5	26	35	10
1412MF112	1"	1/2"	14,5	18	6	15	26	35	10
1412MF134	1"	3/4"	15,5	18	6	20,5	26	35	10
1412MF11434	1-1/4"	3/4"	15,5	20,5	6,5	20,5	34,5	43,5	10
1412MF1141	1-1/4"	1"	18	20,5	6,5	26	34,5	43,5	10
1412MF1121	1-1/2"	1"	18	20,5	6,5	26	40	49	10
1412MF112114	1-1/2"	1-1/4"	20,5	20,5	6,5	34,5	40	49	10
1412MF21	2"	1"	18	25	7	26	51	61,5	10
1412MF2114	2"	1-1/4"	20,5	25	7	34,5	51	61,5	10
1412MF2112	2"	1-1/2"	20,5	25	7	40	51	61,5	10

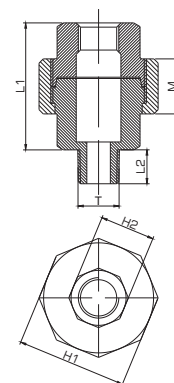


niplo M/F in 3 pezzi • *nipple M/F in 3 pieces*

## 1420-3P



CODE	T	L1	L2	M	H1 (Hex)	H2 (Hex)	
1420MF18P3	1/8"	30	8	13	26	13	10
1420MF14P3	1/4"	33,5	10,5	13,5	29	16,5	10
1420MF38P3	3/8"	36,5	11	15	34	20	10
1420MF12P3	1/2"	39,5	14,5	16	37	24,5	10

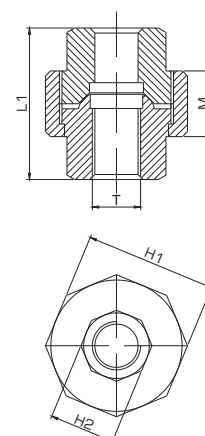


manicotto F/F in 3 pezzi • *sleeve F/F in 3 pieces*

## 1425-3P



CODE	T	L1	M	H1 (Hex)	H2 (Hex)	
1425MF18P3	1/8"	30	13	26	13	10
1425MF14P3	1/4"	33,5	13,5	29	16,5	10
1425MF38P3	3/8"	36,5	15	34	20	10
1425MF12P3	1/2"	39,5	16	37	24,5	10
1425MF34P3	3/4"	42,5	17	44	30	10
1425MF1P3	1"	50	20	52,5	37	10

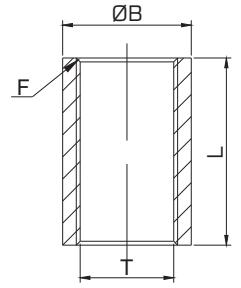


manicotto F/F • sleeve F/F

## 1425



CODE	T	L	F	ØB	
1425MF18	1/8"	17	0,6	13	10
1425MF14	1/4"	24	1	16,5	10
1425MF38	3/8"	25	1	20	10
1425MF12	1/2"	32	1,2	24,5	10
1425MF34	3/4"	35	1,2	30	10
1425MF1	1"	41	1,6	37	10
1425MF114	1-1/4"	45	1,6	46,5	10
1425MF112	1-1/2"	45	1,6	53	10
1425MF2	2"	54	1,6	65	10

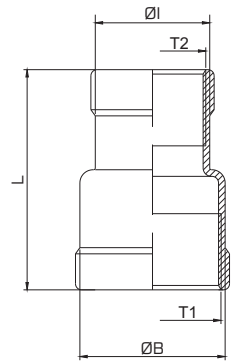


manicotto ridotto F/F • reduced F/F sleeve

## 1426



CODE	T1	T2	ØI	ØB	L	
1426MF1418	1/4"	1/8"	13	16,5	25	10
1426MF3814	3/8"	1/4"	16,5	20	26	10
1426MF1238	1/2"	3/8"	20	24,5	34	10
1426MF3412	3/4"	1/2"	24,5	30	36	10
1426MF134	1"	3/4"	30	37,5	42	10
1426MF1141	1-1/4"	1"	37,5	46,5	48	10
1426MF112114	1-1/2"	1-1/4"	46	53	52	10
1426MF2112	2"	1-1/2"	53	65,5	58	10

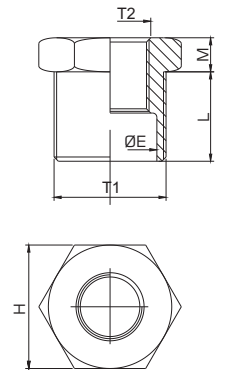


riduzione M/F • M/F reduced

## 1440



CODE	T1	T2	E	L	M	H (Hex)	
1440MF1418	1/4"	1/8"	8	10,5	4	14,5	10
1440MF3818	3/8"	1/8"	11,5	11	5	18,5	10
1440MF3814	3/8"	1/4"	11,5	11	5	18,5	10
1440MF1214	1/2"	1/4"	15	14,5	5	22,5	10
1440MF1238	1/2"	3/8"	15	14,5	5	22,5	10
1440MF3438	3/4"	3/8"	20,5	15,5	5,5	28	10
1440MF3412	3/4"	1/2"	20,5	15,5	5,5	28	10
1440MF112	1"	1/2"	26	18	6	35	10
1440MF134	1"	3/4"	26	18	6	35	10
1440MF11434	1-1/4"	3/4"	34,5	20,5	6,5	44	10
1440MF1141	1-1/4"	1"	34,5	20,5	6,5	44	10
1440MF1121	1-1/2"	1"	40	20,5	6,5	49,5	10
1440MF112114	1-1/2"	1-1/4"	40	20,5	6,5	49,5	10
1440MF2114	2"	1-1/4"	51	25	7	61,5	10
1440MF2112	2"	1-1/2"	51	25	7	61,5	10

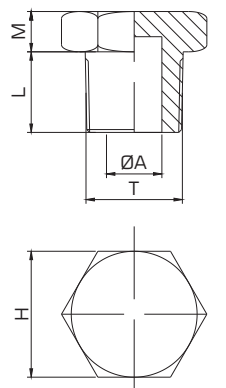


tappo conico BSPT • male plug BSPT thread

## 1450



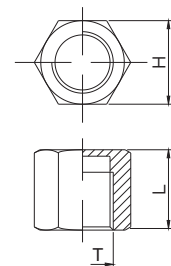
CODE	T	L	M	ØA	H (Hex)	
1450MF18	1/8"	8	4	5,5	12,5	10
1450MF14	1/4"	10,5	4	8	15	10
1450MF38	3/8"	11	5	11,5	18,5	10
1450MF12	1/2"	14,5	5	15	22,5	10
1450MF34	3/4"	15,5	5,5	20,5	28	10
1450MF1	1"	18	6	26	35	10
1450MF114	1-1/4"	20,5	6,5	34,5	44	10
1450MF112	1-1/2"	20,5	6,5	40	50,5	10
1450MF2	2"	25	7	51	62,5	10



tappo femmina • female plug

**1455**

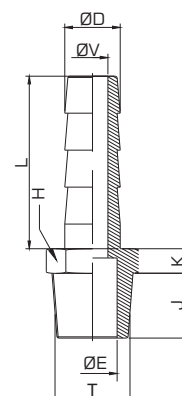
CODE	T	L	H (Hex)	
1455MF18	1/8"	12,5	13	10
1455MF14	1/4"	16	16,5	10
1455MF38	3/8"	16,5	20	10
1455MF12	1/2"	21	24,5	10
1455MF34	3/4"	22,5	30	10
1455MF1	1"	26	37	10
1455MF114	1-1/4"	29	46,5	10
1455MF112	1-1/2"	29	53	10
1455MF2	2"	33,5	65	10



portagomma • barb connector

**1469**

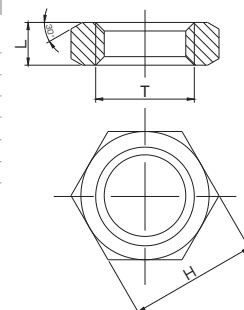
CODE	T	E	J	K	L	ØV	ØD	H (Hex)	
1469MF18T6	1/8"	5,7	11	6,3	23,7	4	6,7	13	10
1469MF14T9	1/4"	8	10,5	4	28	5	9	15	10
1469MF38T11	3/8"	11,5	11	5	33	7	11,5	18	10
1469MF12T15	1/2"	15	14,5	5	38	10,5	15	22	10
1469MF34T20	3/4"	20,5	15,5	5,5	45	15	20	28	10
1469MF1T27	1"	26	18	6	52	22	27	35	10
1469MF114T33	1-1/4"	34,5	20,5	6,5	52	27,5	33	44	10
1469MF112T39	1-1/2"	40	20,5	6,5	56	34	39,5	50	10
1469MF2T52	2"	51	25	7	60	45	52	61,5	10



ghiera passaparete • bulkhead locking nut

**1475**

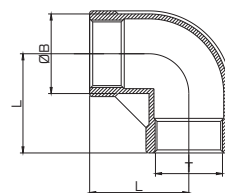
CODE	T1	L	H (Hex)	
1475MF18	1/8"	6	18	10
1475MF14	1/4"	6	24	10
1475MF38	3/8"	7	30	10
1475MF12	1/2"	7	34	10
1475MF34	3/4"	9	42,5	10
1475MF1	1"	11	52	10
1475MF114	1-1/4"	11	58	10
1475MF112	1-1/2"	13	72	10
1475MF2	2"			



gomito F/F • F/F elbow


**1480**

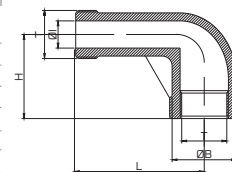
CODE	T1	L	ØB	
1480MF18	1/8"	17	13	10
1480MF14	1/4"	19	16,5	10
1480MF38	3/8"	23	20	10
1480MF12	1/2"	27	24,5	10
1480MF34	3/4"	32	30	10
1480MF1	1"	38	37,5	10
1480MF114	1-1/4"	45	46,5	10
1480MF112	1-1/2"	48	53	10
1480MF2	2"	57	65,5	10



gomito M/F • M/F elbow


**1485**

CODE	T	ØB	L1	L2	ØI	
1485MF18	1/8"	13	26	17	5,5	10
1485MF14	1/4"	16,5	27	19	8	10
1485MF38	3/8"	19,7	29	23	11,5	10
1485MF12	1/2"	24,5	35	27	15	10
1485MF34	3/4"	30	40	32	20,5	10
1485MF1	1"	37,5	46	38	26	10
1485MF114	1-1/4"	46,5	54	45	34,5	10
1485MF112	1-1/2"	53	57	48	40	10
1485MF2	2"	65,5	70	57	51	10



T femmina • female tee

**1490**

CODE	T	L	H (Hex)	
1490MF18	1/8"	17	13	10
1490MF14	1/4"	19	16,5	10
1490MF38	3/8"	23	20	10
1490MF12	1/2"	27	24,5	10
1490MF34	3/4"	32	30	10
1490MF1	1"	38	37,5	10
1490MF114	1-1/4"	45	46,5	10
1490MF112	1-1/2"	48	53	10
1490MF2	2"	57	65,5	10

