



**Tierre Group S.p.a.**  
Via dell'Industria, 18 - 20032 - Cormano (MI) - Italy  
Tel. +39 02 663088.1 - Fax +39 02 66304172  
C.F. e P.IVA 12437570158  
[www.tierregroup.com](http://www.tierregroup.com) - [info@tierregroup.com](mailto:info@tierregroup.com)

---

## INDEX



# VALVOLE DI SCARICO RAPIDO • quick exhaust valves

## VALVOLA DI SCARICO RAPIDO INOX AISI 316 quick exhaust valve INOX AISI 316

**AISI 316**
**DATI TECNICI**

Fluidi compatibili	aria compressa in ambienti aggressivi e fluidi compatibili con i materiali costruttivi
Materiali costruttivi	corpo: acciaio inox AISI 316 guarnizione: viton da 1/8" a 1/4" guarnizione: poliuretano da 3/8" a 1"
Pressione d'esercizio	fino a 10 Bar
Temperature d'esercizio	-20°C +120°C

**Technical specifications**

fluid types	compressed air in aggressive environments and fluids compatible with construction materials
construction materials	body: stainless steel AISI 316 sealing: viton from 1/8" to 1/4" sealing: polyurethane from 3/8" to 1"
working pressure	up to 10 Bar
working temperature	-20°C +120°C

 Prodotti conformi alla direttiva 2002/95/EC **RoHS**

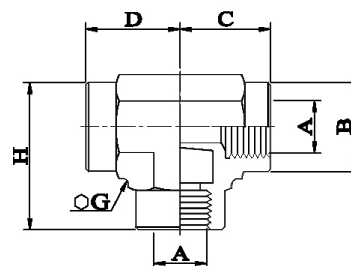
 products in conformity with the directive 2002/95/EC **RoHS**

I dati tecnici e le quote non sono vincolanti • drawings and technical data are not binding

**1400**

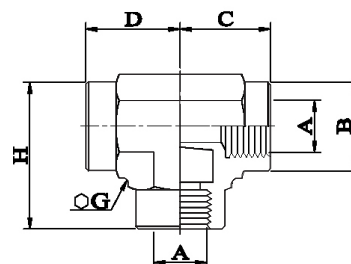
 valvola di scarico rapido in acciaio inox AISI 316 con filetto cilindrico BSPP  
 stainless steel AISI 316 quick exhaust valve BSPP thread

CODE	A	B	C	D	H	G	
1400TR18	G1/8"	17	21	16,5	31,5	22	1
1400TR14	G1/4"	17	21	16,5	31,5	22	1
1400TR38	G3/8"	22	25,5	19	37	27	1
1400TR12	G1/2"	27	31	23	46	32	1
1400TR34	G3/4"	38	44	35	65	46	1
1400TR1	G1"	38	44	35	65	46	1

**AISI 316**

**1400N**

 valvola di scarico rapido in acciaio inox AISI 316 con filetto NPT  
 stainless steel AISI 316 quick exhaust valve NPT thread

CODE	A	B	C	D	H	G	
1400TRN14	N1/4"	17	21	16,5	31,5	22	1
1400TRN12	N1/2"	27	31	23	46	32	1
1400TRN1	N1"	38	44	35	65	46	1

**AISI 316**


SILENZIATORE DI SCARICO • *silencer*SILENZIATORE DI SCARICO INOX AISI 316  
*silencer INOX AISI 316*

AISI 316

## DATI TECNICI

Fluidi compatibili	aria compressa
Materiali costruttivi	acciaio inox AISI 316L
Pressione d'esercizio	fino a 10 Bar
Temperature d'esercizio	-20°C +300°C

## Technical specifications

<i>fluid types</i>	<i>compressed air</i>
<i>construction materials</i>	<i>stainless steel AISI 316L</i>
	<i>up to 10 Bar</i>
	<i>-20°C +300°C</i>
<i>working pressure</i>	
<i>working temperature</i>	

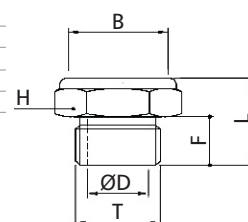
Prodotti conformi alla direttiva 2002/95/EC **RoHS**products in conformity with the directive 2002/95/EC **RoHS**I dati tecnici e le quote non sono vincolanti • *drawings and technical data are not binding*

6880

silenziatore rete inox AISI 316L su base inox AISI 316L • *inox AISI 316L wire silencer on inox aisi 316L base*

CODE	T	ØD	B	F	L	H (Hex)	Peso weight (g)	
6880TR18	G1/8"	6,0	9,0	8,0	15,0	14	8,0	10
6880TR14	G1/4"	8,0	13,0	8,0	15,0	17	12,0	10
6880TR38	G3/8"	12,0	18,0	10,0	18,0	22	20,0	10
6880TR12	G1/2"	15,0	22,5	12,0	22,0	27	38,0	5
6880TR34	G3/4"	20,0	28,0	15,0	27,0	32	62,0	5
6880TR1	G1"	26,0	34,0	18,0	32,0	41	118,0	5

AISI 316L



6882

silenziatore rete inox AISI 316L su base inox AISI 316L filetto NPT • *inox AISI 316L wire silencer on inox aisi 316L base NPT thread*

CODE	T	ØD	B	F	L	H (Hex)	Peso weight (g)	
6882TR18	N1/8"	6,0	9,0	8,0	15,0	14	8,0	10
6882TR14	N1/4"	8,0	13,0	8,0	15,0	17	12,0	10
6882TR38	N3/8"	12,0	18,0	10,0	18,0	22	20,0	10
6882TR12	N1/2"	15,0	22,5	12,0	22,0	27	38,0	5
6882TR34	N3/4"	20,0	28,0	15,0	27,0	32	62,0	5
6882TR1	N1"	26,0	34,0	18,0	32,0	41	118,0	5

AISI 316L

