

NET.Fit[®] datasheet

9

NET.Fit fittings and accessories have been studied by Tierre Group in order to be used for FTTH applications. NET.Fit is in compliance with the IEC 61753-1, EN 50411-2-8 and RoHS 2. NET.Fit is the best solution for blowing optical fibre cables. NET.Fit products have been tested in order to simulate a 20 years lifetime.

System Benefits

- Union connectors with the internal shape designed in order to NOT to be affected by the internal diameter of the duct.
- Metal cartridge (corrosion resistant) inserted into plastic body to highly improve resistance to compression & impact (IEC 61386-24)
- Fully transparent (clear) body for perfect visual inspection for correct tube & fibre insertion
- Locking clips available in order to prevent microducts accidental disconnection.
- Transparent body allows inspection of correct installation of the cable.
- Easy connection & disconnection of the duct due to the smart gripping system.
- Anti Shock Cover available in order to prevent damages. It's special design allow inspection of correct installation of the cable also when installed. Locking clip function included. Granted up to 16,7 J and 50 kN.

Technical Specifications

Fittings

- **Body:** Transparent PA
- **Cartridge:** Nickel plated brass
- **Collet:** Black POM
- **Seals:** NBR suitable for gas
- **Lock Claws:** Stainless Steel

Accessories

- **Locking clip:** Orange POM
- **Anti Shock Cover:** Semitransparent Polypropylene
- **Male plug:** Black POM

Performances

Temperatures:

- Minimum working temperature: -20°C
- Maximum working temperature: +50°C

Pressure:

- Working pressure: 20 bar
- Short term blowing pressure (10): 25 bar
- Burst pressure (all diameters): > 45 bar

Lifetime Simulation:

NET.Fit fittings have been tested in order to simulate a 20 years lifetime. The simulation includes tests at extreme temperatures (-40°C +65°C) and working pressure at 35 bar, salt mist test and test with the most common solvents and contaminating fluids. TUV Rheinland test reports available on demand.

12

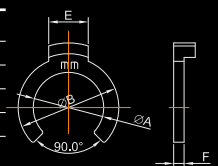
accessories

FXLC



LOCKING CLIP

CODE	ØA (mm)	ØB (mm)	E (mm)	F (mm)
FXLC 05/06	7,9	12,0	5,5	0,8
FXLC 07/08	9,8	14,0	5,5	1,45
FXLC 10	12,0	17,5	6,0	1,80
FXLC 12	14,9	20,0	6,0	1,50
FXLC 14	16,3	22,0	6,0	1,95
FXLC 15/16	18,3	24,5	6,0	2,00

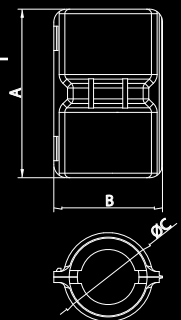


FXASC



ANTI SHOCK COVER

CODE	A (mm)	B (mm)	ØC (mm)
FXASC 07/08	41,5	25,1	19,0
FXASC 10	50,0	29,5	23,4
FXASC 12	52,0	32,0	25,9
FXASC 14	52,0	33,5	27,4
FXASC 15/16	53,5	36,5	30,4
FXASC 20	61,0	41,9	35,6



accessories

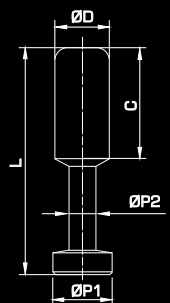
13

WTP



MALE PLUG

CODE	ØD (mm)	L (mm)	ØP1 (mm)	ØP2 (mm)	C (mm)
WTP 04	4	28,8	5,0	3,0	15,0
WTP 06	6	33,0	7,0	3,0	17,0
WTP 08	8	37,0	9,0	4,0	18,0
WTP 10	10	42,0	11,0	5,0	20,5
WTP 12	12	44,0	13,0	6,0	23,0



PZ-G



METAL LARGE HOSE CUTTER

CODE	MEASURES	BLADE	WEIGHT
PZ-G	28 mm max	steel	289,0 g.

TT16



PLASTIC TUBE CUTTER

CODE	MEASURES	WEIGHT
TT 16	16 mm max	23,0 g.

LM-G



SPARE BLADE FOR PZ-G

CODE	WEIGHT
LM-G	2,0 g.