

# NET.Fit<sup>®</sup> datasheet

# 9

NET.Fit fittings and accessories have been studied by Tierre Group in order to be used for FTTH applications. NET.Fit is in compliance with the IEC 61753-1, EN 50411-2-8 and RoHS 2. NET.Fit is the best solution for blowing optical fibre cables. NET.Fit products have been tested in order to simulate a 20 years lifetime.

## System Benefits

- Union connectors with the internal shape designed in order to NOT to be affected by the internal diameter of the duct.
- Metal cartridge (corrosion resistant) inserted into plastic body to highly improve resistance to compression & impact (IEC 61386-24)
- Fully transparent (clear) body for perfect visual inspection for correct tube & fibre insertion
- Locking clips available in order to prevent microducts accidental disconnection.
- Transparent body allows inspection of correct installation of the cable.
- Easy connection & disconnection of the duct due to the smart gripping system.
- Anti Shock Cover available in order to prevent damages. It's special design allow inspection of correct installation of the cable also when installed. Locking clip function included. Granted up to 16,7 J and 50 kN.

## Technical Specifications

### Fittings

- **Body:** Transparent PA
- **Cartridge:** Nickel plated brass
- **Collet:** Black POM
- **Seals:** NBR suitable for gas
- **Lock Claws:** Stainless Steel

### Accessories

- **Locking clip:** Orange POM
- **Anti Shock Cover:** Semitransparent Polypropylene
- **Male plug:** Black POM

## Performances

### Temperatures:

- Minimum working temperature: -20°C
- Maximum working temperature: +50°C

### Pressure:

- Working pressure: 20 bar
- Short term blowing pressure (10): 25 bar
- Burst pressure (all diameters): > 45 bar

## Lifetime Simulation:

NET.Fit fittings have been tested in order to simulate a 20 years lifetime. The simulation includes tests at extreme temperatures (-40°C +65°C) and working pressure at 35 bar, salt mist test and test with the most common solvents and contaminating fluids. TUV Rheinland test reports available on demand.

# 10

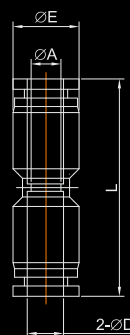
## push-in fittings

### FXUC

#### UNION CONNECTOR



CODE	ØD (mm)	ØA (mm)	ØE (mm)	L (mm)
FXUC 04	4	3,5	11,0	32,6
FXUC 05	5	4,4	13,0	35,2
FXUC 06	6	5,3	13,0	35,2
FXUC 07	7	6,1	14,6	39,1
FXUC 08	8	7,1	14,6	39,1
FXUC 10	10	9,3	19,0	48,4
FXUC 12	12	11,0	21,5	49,2
FXUC 14	14	13,0	23,0	49,4
FXUC 15	15	14,0	26,0	51,0
FXUC 16	16	14,0	26,0	51,0
FXUC 18	18	17,0	29,0	57,4
FXUC 20	20	19,0	31,0	58,4

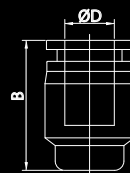


### FXPF

#### PLUG



CODE	ØD (mm)	B (mm)
FXPF 04	4	17,5
FXPF 05	5	17,5
FXPF 06	6	17,5
FXPF 07	7	20,8
FXPF 08	8	20,8
FXPF 10	10	25,3
FXPF 12	12	25,6
FXPF 14	14	25,7
FXPF 15	15	27,0
FXPF 16	16	27,0
FXPF 18	18	30,2
FXPF 20	20	30,7



# push-in fittings

# 11

## REDUCED UNION CONNECTOR

### FXG



CODE	ØD1 (mm)	ØD2 (mm)	ØE1 (mm)	ØE2 (mm)	ØA (mm)	ØB (mm)	L (mm)
FXG0705	7	5	15,0	13,5	6	4,3	36,5
FXG0805	8	5	15,0	13,5	7	4,3	36,5
FXG1207	12	7	21,5	15,0	11	6	44,3
FXG1208	12	8	21,5	15,0	11	7	44,3
FXG1210	12	10	21,5	19,0	11	9	47,2
FXG1412	14	12	23,5	21,5	12	11	48,3

